

JÖNKÖPING

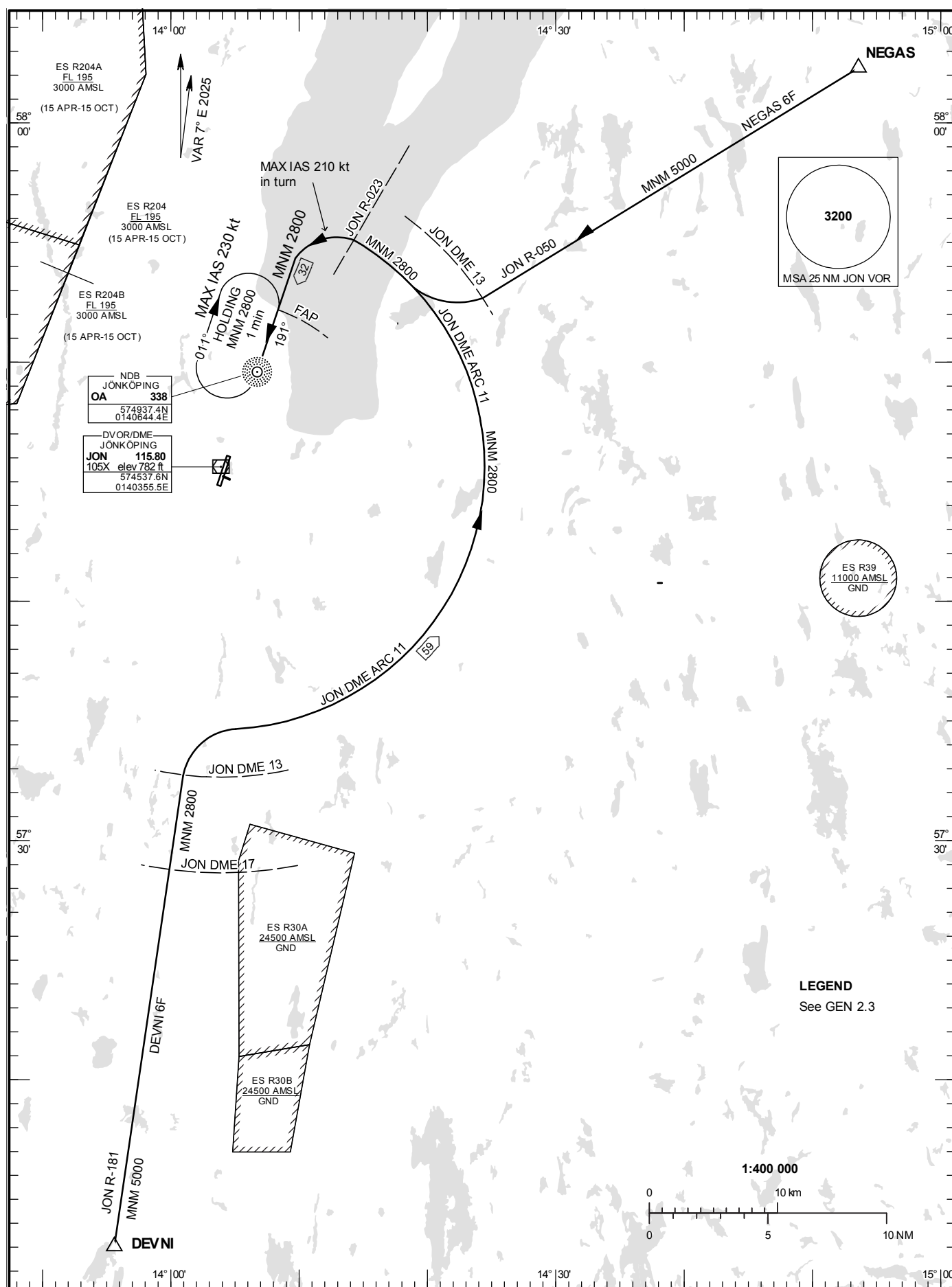
RWY 19

DEVNI 6F, NEGAS 6F

STANDARD INSTRUMENT
ARRIVAL CHART (STAR) -
ICAO

HGT and ALT in ft
BRG are MAG
TA 5000 ft AMSL

JÖNKÖPING TOWER 118.255



JÖNKÖPING

ARRIVAL (STAR) RWY 19

REMARK

Descent to minimum altitude for an arrival route must not be initiated until an ATC clearance to this altitude or an approach clearance has been received.

DEVNI SIX FOXTROT ARRIVAL (DEVNI 6F)

At DEVNI intercept JON R-181, not below 5000 ft until JON DME 17. At JON DME 13 turn right and proceed on JON DME ARC 11, not below 2800 ft. At JON R-023 turn left to intercept LOC SJ, not below 2800 ft until FAP.

NEGAS SIX FOXTROT ARRIVAL (NEGAS 6F)

At NEGAS intercept JON R-050, and proceed to JON DME 13, not below 5000 ft. Turn right and intercept JON DME ARC 11, not below 2800 ft. At JON R-023 turn left to intercept LOC SJ, not below 2800 ft until FAP.